



2017 NEWSLETTER

Sustaining the Legacy of Volunteer Public Service and Generosity



BCF 2016 PHOTOGRAPHY CONTEST WINNERS



Top row from left: **First Place:** "After the Storm... Along the Shoreline" Irene Myers

Third Place: "Happy Dog" (Detail) Leela Voges

Middle row from left: **Honorable Mention:** "Misty Day from Beach Road Dock" Meg Reid

Second Place: "Magical Ring Mountain" (Detail) Caesar Ruegg

Youth Winner: "Ring Mountain" Carly Zech

Left: Contest winners pose with their photos. Photo: Diane Smith



OUR MISSION

- To preserve and enhance the quality of life in Belvedere.
- To form an endowment fund with contributions from all of Belvedere's citizens.
- To provide grants to support projects and volunteers working to enhance the quality of life in Belvedere.

OUR VALUES

- To sustain the legacy of volunteer public service.
- To perpetuate the generosity of Belvedere's citizens.

OUR COMMITMENT

- To be a vital resource to sustain and nurture Belvedere's rare and exceptional character.
- To support the energy and creativity of our citizens.

Please support the Belvedere Community Foundation by making a contribution.

MAIL TO: Belvedere Community Foundation
Box 484, Belvedere-Tiburon CA 94920

Or donate securely online:
<http://belvederecommunityfoundation.com/donate.htm>

BCF Updates Its Online Presence

In an effort to improve communication with the community, we're bringing our website into the modern era.

The new format will be compatible across all devices and will take full advantage of available screen space.

Our first improvement was to allow online donations. Next we updated the photo contest to make it easier to use. Keep an eye on our website as we modernize it from tip to toe and add new capabilities to keep the community informed.

EXECUTIVE COMMITTEE

Juli Tantum,
PRESIDENT

Leni Eccles,
VICE PRESIDENT

Wendy Miller,
SECRETARY

Claus Lund,
TREASURER

Ann Aylwin

Mimi Cornelius

Jean Cromwell

Anne Feinberg

Debbie Fisher

Cathy Frymier

Sue Hoeschler

Astrid Johnson

John Pearson

TRUSTEES EMERITUS

Donald Davis

Sandra Donnell

Phil Ehrlich

Roger Felton

William Smith

Larry Wheat

ADVISORY TRUSTEES

Monique Adams

Janet Andersen

David Anderson

Joan Bekins

Steve Block

Kathleen Brady

Robert Brown

James Burke

Dayle Burnes

Anne Butler

James Campbell

Robert Cappelloni

Pat Carapiet

Tracy Cunningham

Christine Decker

Richard Decker

Phillip DeMaria

Margaret DeSomma

Doug Dillard

Jill Einstein

Jean Fair

Marcia Felton

Rita Fink

Gretchen Graham

Sallie Griffith

Muriel Harris

Wyman Harris

Sharon Hilpert

Molly Hofmann

Richard Hyde

Glenn Isaacson

Jenny Jackoboice

Pepper Jackson

Neil Jacobs

Diane Kahn

Sharon Kahn

Anne Kasanin

Teke Kelley

Bryan Kemnitzer

Arthur Kern

Gretchen Kimball

Georgia Kirchmaier

Nicole Klionsky

Whitney Lee

Bob Leitstein

Claire McAuliffe

Bob McCaskill

Kris McIntosh

Sue Milliron

Noelle Montgomery

Charie Morrison*

Julie Moyne

Robyn Murphy

Jill Nash

Greg Ostroff

Mel Owen

Doug Patterson

Claude Perasso

Tom Perot

Eleanor Phipps-Price

Annie Prell

Stephanie Pugash

Pam Robertson

Harvey Rogers

David Ross

Sarah Ryan

Tim Ryan

Jennifer Sann

Greg Spenser

Bonnie Spiesberger

Jeffery Stein

Brei Tobin

Betty Gaye Toney

Virginia Tusher

Marion Welisch

Bill Wheeler

Corinne Wiley

Deborah Wilton

Sharon Winslow

Barbara Winter

Laleh Zelinsky

**passed away in 2017*

BCF PRESIDENT'S LETTER

Fall 2017

In looking back over the Belvedere Community Foundation's past year, there is much to be excited and proud about. The BCF all-volunteer board met monthly to approve the grants featured in this newsletter and oversee projects benefitting the residents of our community.

One such project is the installation of brooms on some of Belvedere's iconic lanes to encourage walkers to sweep these public steps and paths. The broom project was featured on the front page of the *Marin Independent Journal* on July 13th with an accompanying photo of Roger Felton, one of BCF's founders and a tireless volunteer around town. The brooms are the first step in BCF's commitment to working with the City of Belvedere to maintain and improve our cherished lanes. This is all possible thanks to the hard work of our wonderful Public Works Department.

These accomplishments would not be possible without the enduring and generous support BCF receives from donors – friends and neighbors throughout Belvedere. We now offer two ways to make your annual tax-deductible donation of any amount:

- By check in the enclosed envelope
- By credit card online at www.belvederecommunityfoundation.com

Please also plan on joining us for our Annual Meeting on Thursday, November 9th at 7:00pm in Belvedere's Town Hall. We'll showcase this year's annual photo contest and winners, hear a brief BCF update, and most importantly enjoy some time together as a community.

We truly appreciate this community's enthusiasm and look forward to the year ahead!

-Juli Tantum, BCF President



Juli Tantum

You Are Invited! **JOIN US FOR THE 2017 ANNUAL BOARD MEETING**

Thursday, November 9

7:00 pm

Belvedere City Hall

Photography Contest

Annual Meeting

& Reception

DO YOU HAVE A NEW PROJECT IDEA THAT NEEDS LOCAL FUNDING?

The Belvedere Community Foundation welcomes grant requests for projects that assist in preserving the unique character of Belvedere and enhance the overall quality of life in the community. If you would

like to apply for a grant, please

submit an application online at

<http://belvederecommunityfoundation.com>

ANGEL ISLAND ADVENTURE RACE OFFERS CHALLENGES AND FUN

Two hundred competitors strived to win – or at least survive – the second annual Angel Island Adventure Races. Races were divided into two categories; the youth and family race and the adult race. Racers circumnavigated the island by running and biking, switching between the two as they chose. Teams also competed in ten obstacles, including the super sling shot, giant puzzle mazes, and drawing challenges. After the race the competitors restored themselves at a large party with music, lawn games, and a barbeque.



Photo: Elliot Karlan

KIDS AND TEENS ROCK AT THE LIBRARY'S 20th ANNIVERSARY CELEBRATION

For Belvedere Tiburon Library's 20th Anniversary Celebration, BCF sponsored two concerts. The children's concert featured Emmy award-winning band **Lucky Diaz**, followed by the **Family Jam Band**, which *People Magazine* called the "#1 in COOLEST kids music." The rock and jazz teen concert featured Redwood High School's **The Sherpas**.



Clockwise from left: Paige Peterson reads from her book "Blackie; The Horse Who Stood Still"; The Rockwell family; The Schute family enjoys Lucky Diaz; The Sherpas rock the teen concert; Librarians Rebecca Jung and Alicia Bell savor the weekend

Photos: Heather Powell, Library Photographer



GOLF PUTS THE FUN IN FUNDRAISER

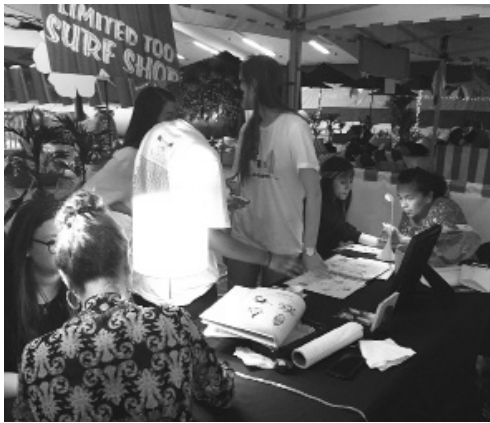
The Tiburon Belvedere Golf Tournament, held every September at the beautiful San Geronimo Golf Course, gives Tiburon Peninsula residents a chance to show their golfing prowess. The fetching hats were supplied by BCF. Proceeds from the tournament benefit the Landmarks Society and the Ranch.

Larry Drew (left) and Jack Fiorito are ready to play



SAFE AND SOBER GRAD NIGHT THROWS ITS 39th PARTY

The Redwood High School PTSA again threw a spectacular substance-free party for the 350 graduating seniors. Devoted parent volunteers transformed the Mt. Tam Racquet Club into a beach scene, with games, sports, and swimming from 9:30 pm until 3:30 am. A taco bar and lots of snacks kept the energy high, while jump castles, henna tattoos, a “casino,” and an hourly raffle entertained the graduates. Local community organizations provide approximately 25% of funding for Grad Night, which is open to all graduating seniors.



CLIMATE SMART NURSERY AIDS AUDUBON'S RESTORATION PROJECTS

Richardson Bay Audubon is building a greenhouse and shade structure to produce native plant seedlings in an ideal and controlled environment. Seedlings will be used for on-site habitat restoration and will also be available for sale to residents and businesses. The greenhouse, which will be open to the public, will help local volunteers and interns learn about the process of habitat restoration and will serve as a demonstration site for how home and municipal gardens can use native vegetation. Volunteers have been responsible for site preparation and construction of the prefabricated greenhouse.



WALK YOUR HISTORY FOLLOWS THE OLD RAIL TRAIL

The Belvedere-Tiburon Landmarks Society, with support from The Ranch, presented the fifth bi-annual **Walk Your History** in April. This free event engaged residents to learn about Tiburon Peninsula history. Volunteer docents shared the history of the areas along on the Old Rail Trail, including the Library, Lagoon, old railroad path, West Shore Road's cod fishery, brick kiln, and oyster farming in Richardson Bay.

*Right to left: Docent Jeanne Price describes the brick kiln to Heidi Reutiman and Joy Reisner
Photo: Diane Smith*





Campers learn that making music is Better Together

BETTER TOGETHER AT CAMP CREATE 2017

This year's theme at Camp Create was **Better Together**. Every day the children were asked to reflect on how their day was made better by being together and working together. This was the twenty-first year that St. Stephen's Episcopal Church has offered the week-long camp in its effort to deepen bonds between the culturally diverse, often separated, communities of Marin. Through exceptional creative arts teaching, sixty-four children were able to take part in the many activities and festivities. Eighteen paid counselors, several from Belvedere, and approximately forty dedicated volunteers, in conjunction with art and music teachers, joined together to make this year's camp a huge success. The Belvedere Community Foundation is pleased to support this wonderful community endeavor.

2016 ANNUAL BCF BOARD MEETING

Members of the BCF Board from left to right:

Back row: Astrid Johnson, Ann Aylwin, Debbie Fisher, Claus Lund.

Front row: Sue Hoechsler, Leni Eccles, Juli Tantum, Wendy Miller, Mimi Cornelius.

Board members not pictured: Jean Cromwell, Cathy Frymier, John Pearson.



Photo: Diane Smith



NEW BELVEDERE RESIDENTS WELCOMED IN STYLE

On May 11, BCF hosted a Belvedere Newcomers' Party at the Cove Road home of board member **Sue Hoeschler**. Several of our newest residents mingled with BCF volunteers and were introduced to the Belvedere Community Foundation and its mission. Mayor **James Campbell** and our new City Manager, **Craig Middleton**, were also present to greet our new neighbors.

The weather cooperated for a beautiful Belvedere evening.

Left to right: Julie & David Flaherty, Juli Tantum, Sue Hoeschler, Travis & Nicky Rettke
Photo: Diane Smith

BCF GRANT RECIPIENTS 2015-2017

City of Belvedere

Beach Rd. Park Landscaping
Block Captain Program
Block Parties
Brooms on Lanes
Clean and Green Day
Concerts in the Park
Disaster Preparedness
Movie Night
Lane Handrails

Landmarks Society

Ark Newspaper Archives
China Cabin
Walk Your History

Belvedere-Tiburon Library Foundation

Blackie's Hay Day
20th Anniversary Concerts

The Ranch

Family Fun Day & Adventure Races
Golf Tournament
TeenWorks
Teen Zone

Richardson Bay Audubon Center

Water Bird Festival
Climate Smart Nursery

Seniors: Tiburon Peninsula Village

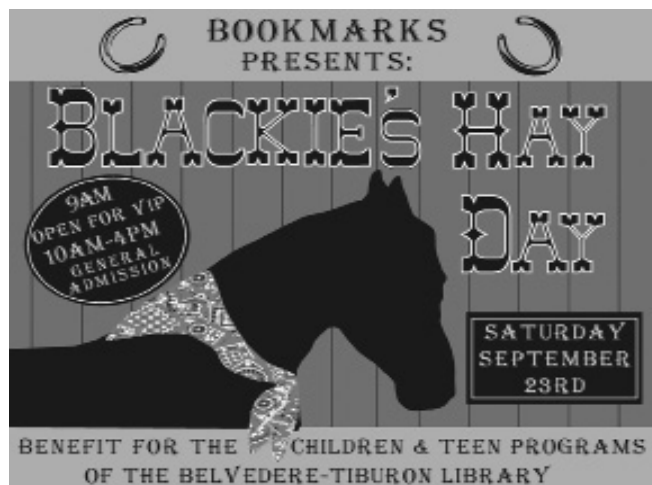
Tiburon Peninsula

Friday Nights on Main
Fire Department
Green Team (Peninsula Pride)
Harvey's Garden at Blackie's
Salmon Institute
Trestle Glen Project

Youth/Schools

Camp Create at St. Stephens
Foundation for Reed Schools
Redwood High Grad Night
Wheel Escape
Yellow Bus Program

*Please support
the Belvedere Community
Foundation by making
a contribution.*



Ten Years of Blackie's Hay Day

2017 marks the tenth year that BCF has been a sponsor of **Blackie's Hay Day**, an old-fashioned country fair at Blackie's Pasture. All proceeds benefit the Belvedere-Tiburon Library's children and teen programs.

TWENTY YEARS OF CONCERTS IN THE PARK

The twentieth season of Concerts-in-the Park filled the Belvedere Community Park with a blockbuster summer of four musical performances for the community's enjoyment: **Men's Chorus and Phil Claypool; Jonathan Poretz and Friends; Windsor Street Blues Band and Rumors; and Caroline Sky and Flaming O's.**



HELP KEEP OUR LANES DEBRIS FREE

Following Mill Valley's lead, the Belvedere Community Foundation, with the assistance of Belvedere's Public Works Department has begun a pilot program installing brooms on two Belvedere Lanes, Pagoda and McLean. Sweep away as you walk up and down the island this fall, and spread the word about the BCF-sponsored brooms!

HARVEY'S GARDEN BRIGHTENS BLACKIE'S PASTURE

Master Gardener Harvey Rogers reports that "Harvey's Garden" at Blackie's Pasture welcomed more Tiburon Peninsula residents and visitors in 2017 than ever before. Volunteers pruned, removed the invasive "Bindweed" growth using a sheet method process instead of carcinogenic chemicals, put in new topsoil, and replanted the garden. Harvey reported that the unusual amount of rain this year resulted in a much longer blooming period.

Left to right: Carol Felton, Harvey Rogers and James Campbell freshen up the garden.



RUN FOR REED

THE FOUNDATION FOR REED SCHOOLS



The Run for Reed Schools has grown from an after school "fun run" to a community event drawing over 780 race participants with the goal of promoting student health and wellness and providing an opportunity for families to come together in support of our schools. With support from community organizations including BCF, the October 2016 event raised over \$16,500 for the Reed School District.

TEENWORKS ENCOURAGES VOLUNTEER SPIRIT

TeenWorks is a community service club for middle schoolers organized by The Ranch. Members volunteer for Tiburon Peninsula events and projects during the year, earning participation points for their efforts. Events include Coastal Clean-up Day, Broom Busters, Angel Island Cleanup, and Ranch-sponsored events such as the Halloween Boo Bash, Santa's Breakfast, and the Angel Island Adventure Race. BCF is proud to sponsor TeenWorks, which fosters community participation and a culture of giving back.

TeenWorks volunteers help rid our open spaces of invaders during a Broom Busters event



YELLOW BUS CHALLENGE IMPROVES DRIVERS' TEMPERS

BCF contributed a grant for the 2016-2017 Yellow Bus Challenge, a school bus program for students in the Reed School District. In its second year, almost 50% of the RUSD students use the buses. The bus program has reduced morning/school bell traffic on Tiburon Boulevard by 40% and has cost-saving and environmental advantages as well.